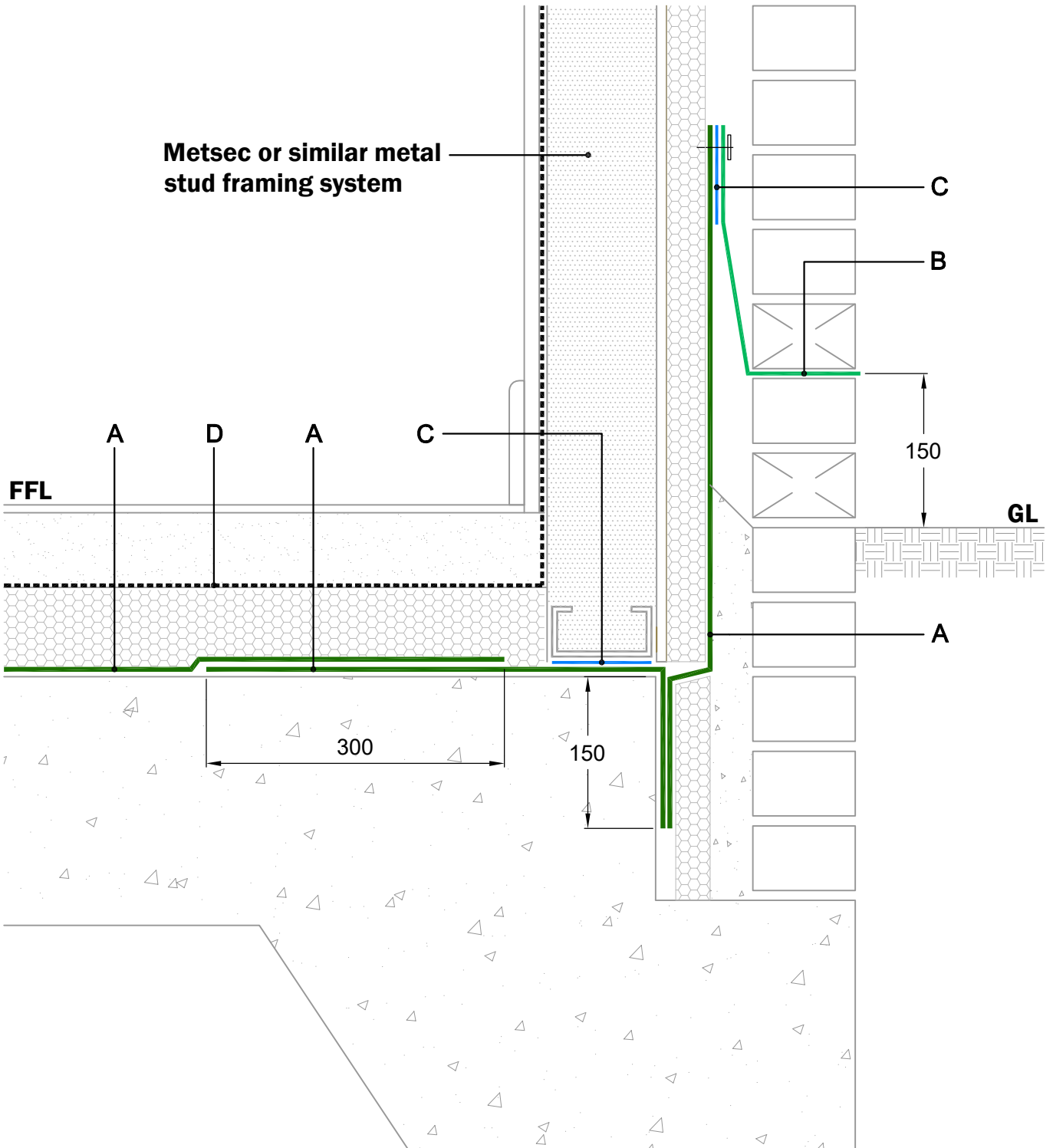


Metsec or similar metal stud framing system



Standard Detail



Tel : 01403 799600
Email : techsupport@cordek.com

Drg. Title:
Cordek Radon Protection System
Typical RC Slab Edge Detail - SFS System

Drawn: SP

Date: 26.06.19

Scale: NTS

Drg. No. ENG/GP/MEM/RAD/07

Rev: B

Materials :-

Refer to Cordek technical data sheets for full detailed material specification

A. Cordek Gas Resistant Self Adhesive Membrane
B. Cordek Gas Resistant DPC
C. Cordek Double Sided Jointing Tape
D. VCL / Floor finishes by others

Notes :-

- This detail is issued for guidance purposes only, with final approval required from the designer
- Do not scale from drawing, use dimensions provided
- All laps and junctions must be fully sealed with appropriate welding techniques or jointing system
- The intended construction sequence should be considered prior to selection of the appropriate Cordek standard detail to ensure that installation is practical and achievable
- In accordance with BS8102:2009, should hydrostatic water pressure be a risk, additional waterproofing methods should be considered
- In line with industry guidance and good practice, a sub-floor venting layer should be considered - please consult Cordek for further advice