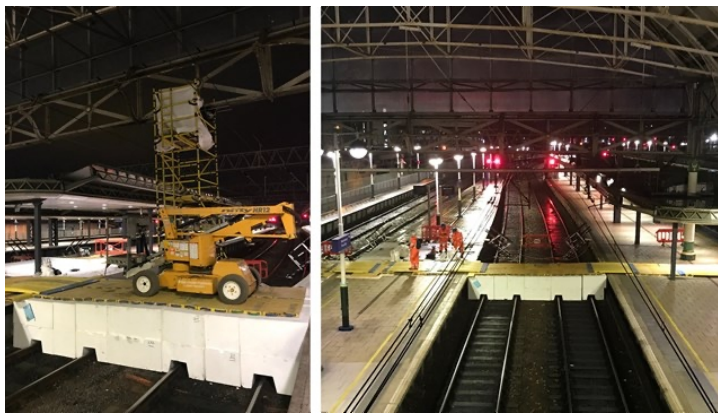


Media Centre

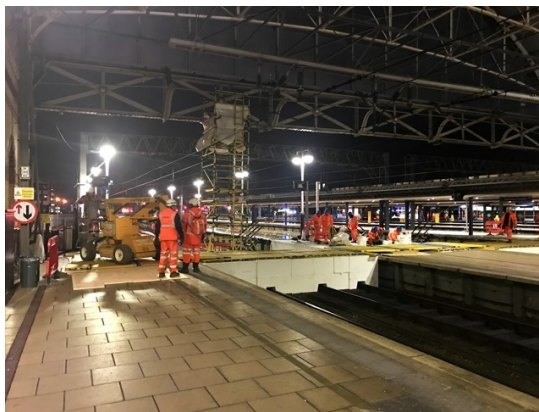
Polystyrene platforms bridge the gap during Piccadilly roof repairs



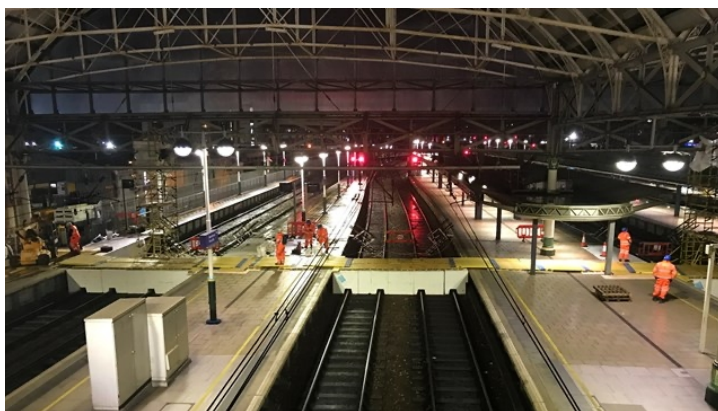
Composite of Manchester Piccadilly roof repairs over Christmas



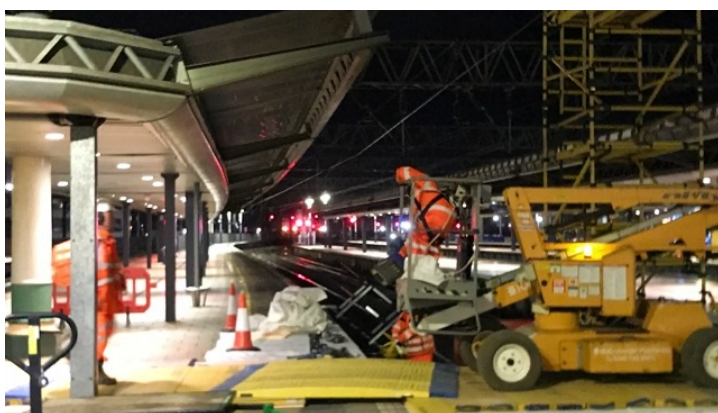
Aerial platform on polystyrene blocks during Piccadilly Christmas roof repairs



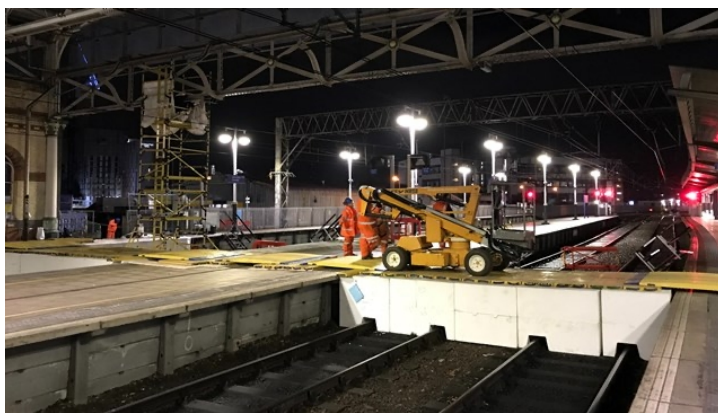
Wide shot of the polystyrene blocks used for Manchester Piccadilly roof repairs



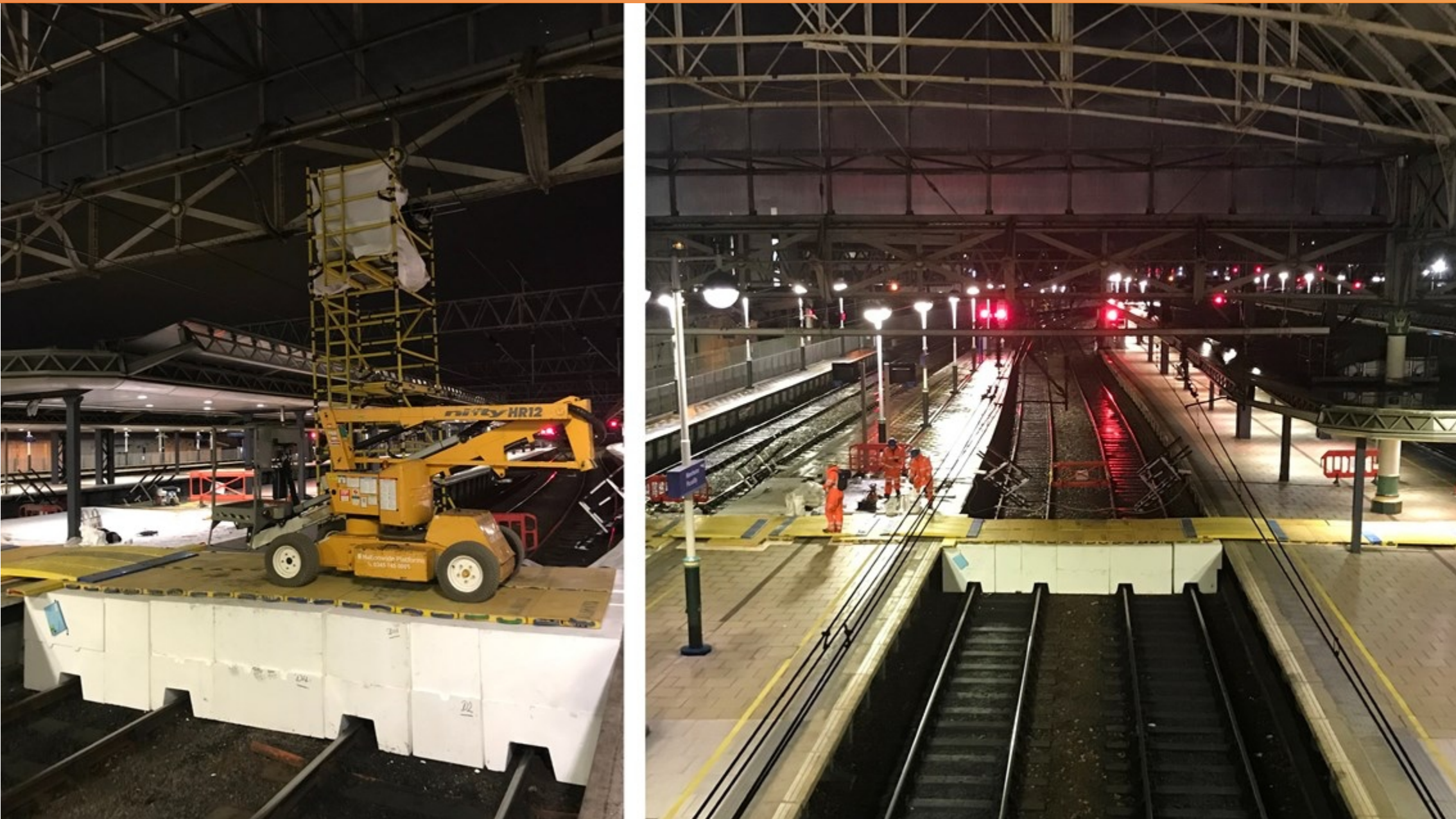
View from footbridge of polystyrene platform used for Piccadilly roof repairs



Close up shot of polystyrene blocks meeting the platform edge



View of platform bridge made of polystyrene for Piccadilly roof repairs



Tuesday 10 Jan 2023

Polystyrene Platforms Bridge The Gap During Piccadilly Roof Repairs

Region & Route: North West & Central | North West & Central: North West

Passengers are being advised of a full station closure at Manchester Piccadilly this Sunday when specialist teams carry out essential roof repairs.

No trains will be running on Sunday 15 January as the 25,000-volt overhead lines which usually power trains need to be switched off for engineers to work at height.

They are continuing strengthening work to the Victorian-built train shed's gable end which began over Christmas.

Today (Tuesday 10 January) Network Rail has released pictures of that first phase of the work.

Polystyrene blocks were used to bridge the gaps between platforms to build a temporary route along the width of the station so that mobile elevated working platforms (MEWPs) could reach the roof structure.

Twelve 'splice plates' - which join the bottom chords of the steel trusses - are being replaced. They have been specially designed in keeping with the heritage features of the building.

With work continuing on Sunday, rail replacement buses will be operation to keep people on the move.

Manchester Piccadilly's station concourse and retail units will stay open, but passengers will be directed to the buses on Station Approach to complete their journeys.

People are advised to allow extra time for their journeys and check National Rail Enquiries at www.nationalrail.co.uk or with their individual train operator* before they travel.

“**Kara Wood, Network Rail's North West head of performance and customer relationship, said:** “We’ve been carrying out a lot of essential work to improve Manchester Piccadilly station over Christmas and New Year and this weekend the teams are coming back to complete the second phase of roof maintenance.

“Because we have to turn the power lines off to safely carry out the structural work it means we can’t run any trains all day on Sunday. I'd like to thank passengers in advance for their patience while we keep people on the move with rail replacement buses and urge people to check National Rail Enquiries so they know how it will impact on their journey.” ”

Meanwhile further railway upgrades in Greater Manchester will also see changes to journeys in the coming weeks.

On 15 January and 22 January, resurfacing works will be taking place on platforms 13 & 14 and tactile studs are being installed to make it safer for blind and partially sighted people.

Both platforms will be closed to trains to complete the resurfacing work which started over the Christmas break.

Then upgrades on the Manchester Airport line which started last weekend will continue on Sundays in January and February.

Three stations (Mauldeth Road, East Didsbury and Gatley) are having platforms extended to allow for longer trains to call there in the future.